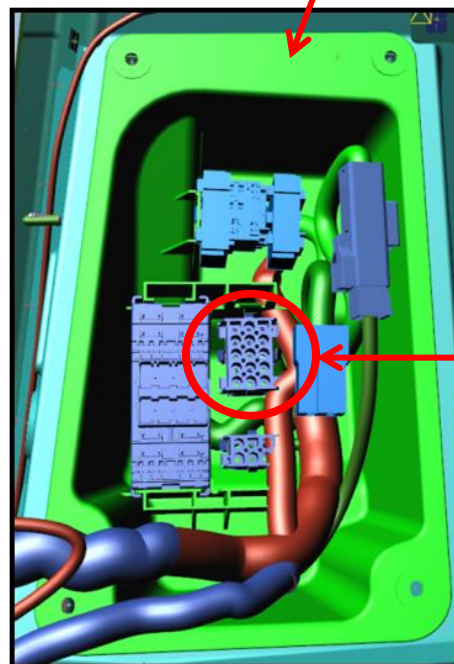
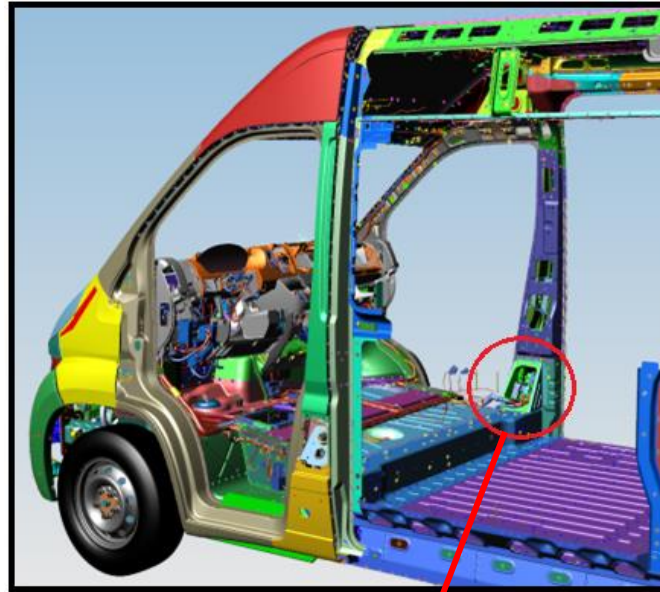


UPFIT INTERFACE CONNECTOR

The up fit interface connector is available as a standalone option (Sales code BC3) and is package with the Aux Power Connector (BC1) or Rear Speaker Wiring Prep. (RED) This option **cannot be added** at the aftermarket or by the dealer. The connector is located behind a panel at the base of the passenger side B pillar. Remove the panel to expose the connectors.



Up Fit Interface Connector

PROMASTER UPFIT INTERFACE CONNECTOR

Connectors and Terminals Manufactured by **Tyco Electronics**

Vehicle Harness Connector: Tyco P/N **926647-1**

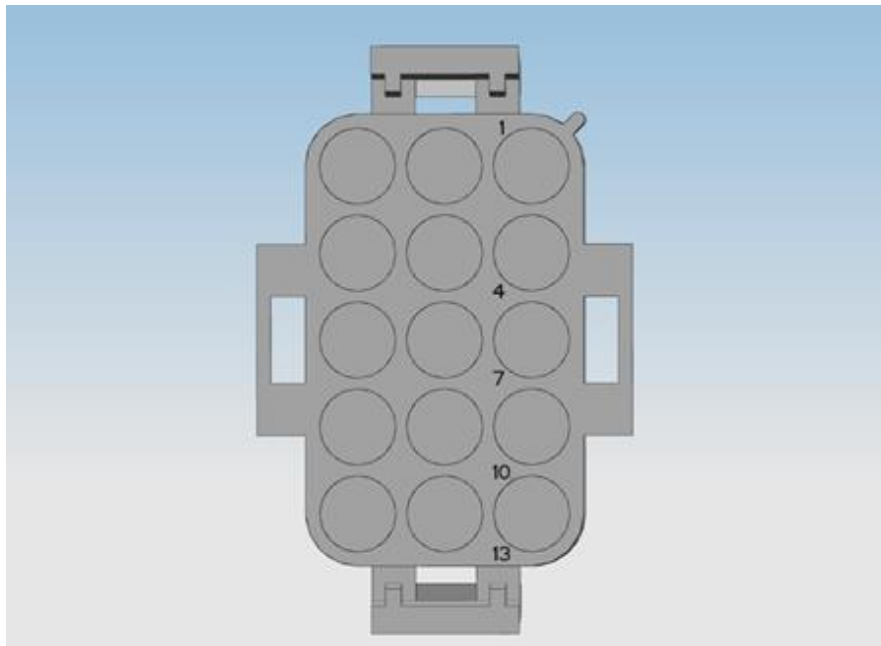
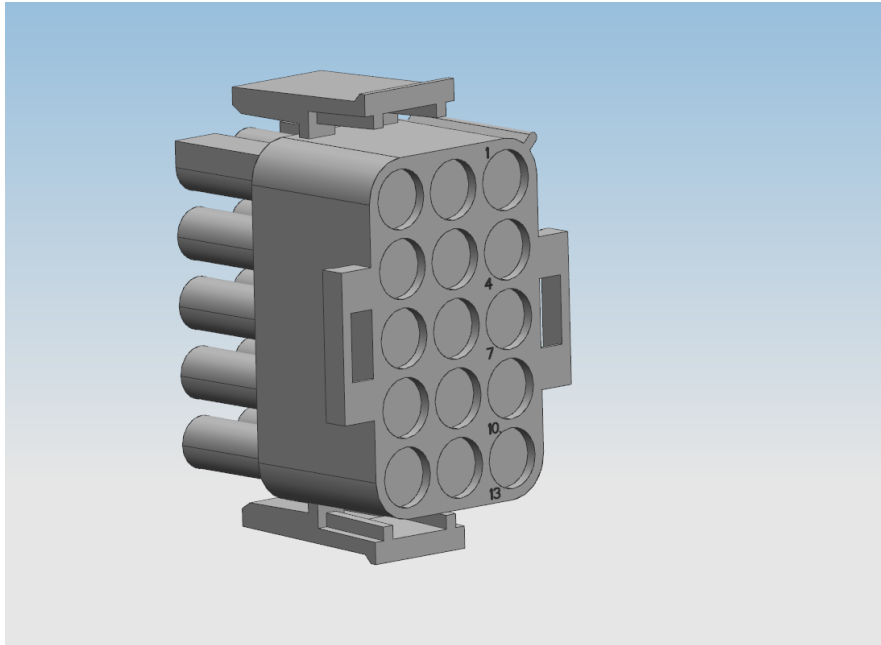
Mating Connector: Tyco P/N **1-480710-0** (up fitter provided)

Mating Connector Terminal: Tyco P/N **350218-1** (up fitter provided)

PIN	Circuit Function	Min Wire Size (mm ²)	Wire Color	Notes
1	Not Connected			
2	Aux Run Relay Control (LSD)	0.35	BR/BK	300 mA Max current – pulled to ground with engine running
3	Vehicle Speed Output (VSO)	0.35	BR/LG	5mA Max Current (0 to 5V Square Wave. 50% Duty Cycle. Variable Frequency. 0 V at 0MPH. Vspd (MPH) = F (HZ) *.6 (MPH/HZ) Round to nearest MPH)
4	Door Lock Control (Chassis Cab Only)	1.5	RD/BK	12A Max Current 400mS Pulse
5	Door Unlock Control (Chassis Cab Only)	1.5	OR/LG	12A Max Current 400mS Pulse
6	Rear door Ajar Signal (Chassis Cab Only)	0.35	BK/VT	Ground this circuit when any rear door is open (minimum contact cleaning current 10mA)
7	Courtesy Lamp Feed	0.5	RD/LG	Power supply (+) for timed ceiling light 15' with key off (Pmax= 20W at 12V)
8	Cargo Lamp (Dimmer) (Chassis Cab Only)	0.75	WT/LG	Ceiling light control (-) Pmax=20W at 12 V
9	CAN B +	0.35	WT	Low Speed Interior Bus for use with MOPAR Certified Systems
10	CAN B -	0.35	BL	Low Speed Interior Bus for use with MOPAR Certified Systems
11	Park Lamp Relay Control (LSD)	0.5	YL/RD	300mA Max Current- Pulled to Ground with Park Lamp on
12	Aux 2 Switch Output (2016 and Newer)	2.5	YL/BK	Ignition fed, 20 Amp fuse, F87 in adjacent fuse block (Sales Code LHL)
13	Ignition Feed	0.5	BL/YL	600mA Max Current 12V with Ignition on 5A Fuse CBC FAO
14	Rear Heat Control (2015 and Newer)	0.35	BR/BK	Low Side Drive for Vehicles with Rear Heat and AC Prep (Sales Code HDG) 300 mA Max continuous.
15	Aux 1 Switch Output (2016 and Newer)	2.5	RD	Battery fed, 20 Amp fuse, F86 in adjacent fuse block (Sales Code LHL)

PROMASTER UPFIT INTERFACE CONNECTOR

The following views are of the wire insertion side of the up fitter provided mating connector.
(Tyco P/N **1-480710-0**)



PROMASTER UPFIT INTERFACE CONNECTOR