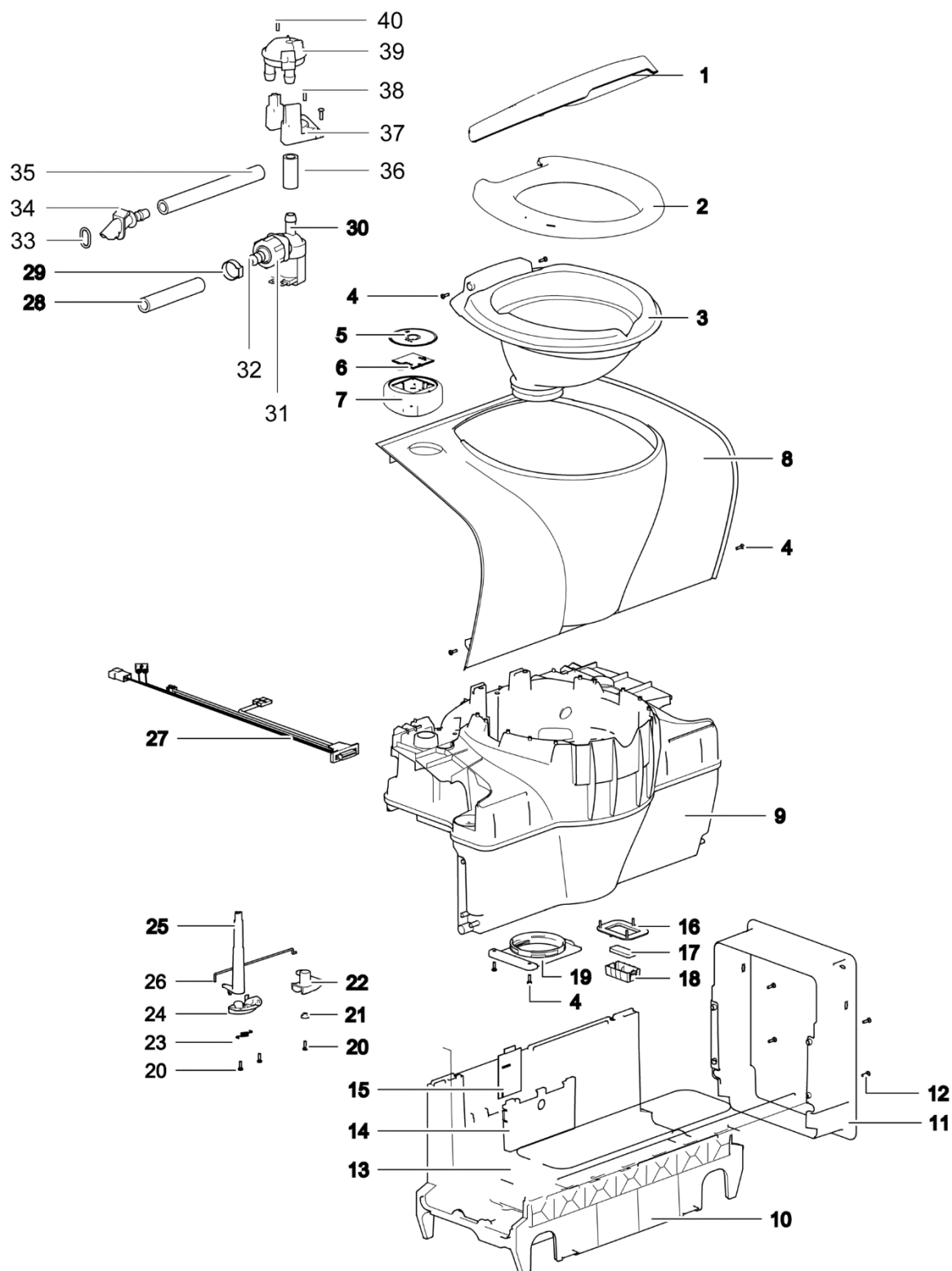
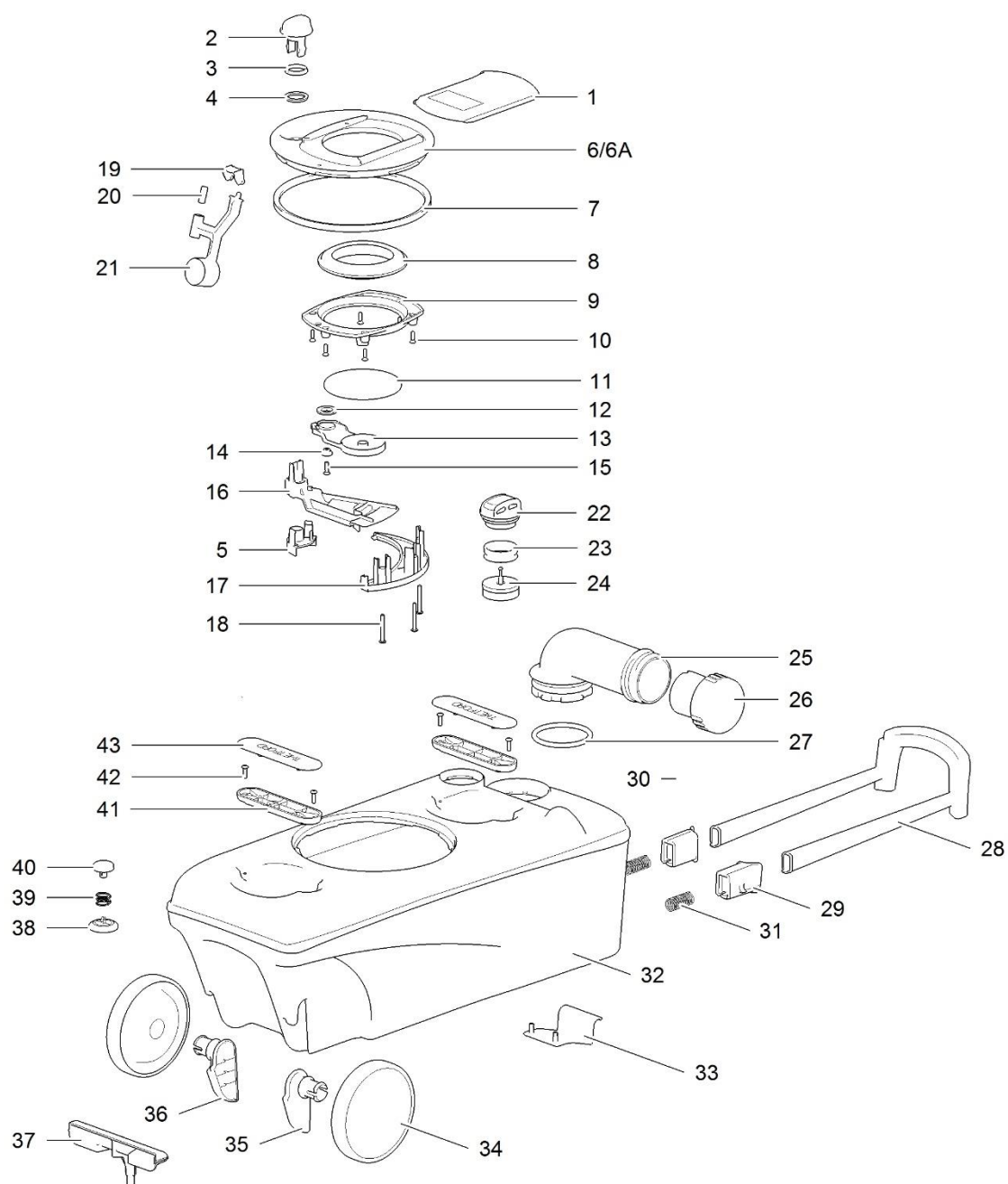


LE756_C502C-X_0518-V03

		Spare part number	Spare part number	Spare part number	Colours available
1	Cover		90713		62, 127
2	Seat				
3	Bowl				
4	Screw				
5	Sticker control knob		90725 <i>C-model</i>	90724 <i>X-model</i>	62, 127
6	Control PCB		(before 90701)	(before 90709)	
7	Control knob				
8	Cosmetic cover straight Cosmetic cover curved				
9	Water level sensor <i>X-model only</i>	90702			
10	Bench welded				
11	Cap waterfill funnel	16848			16
12	Waterfill funnel		90710 <i>waterfill funnel</i>	90719 <i>waterfill funnel</i>	
13	O-ring		150mm	180mm	
14	Waterfill elbow				
15	O-ring				
16	Tube PVC				
17	Drain connector				
18	Sight tube				
19	Clip sight tube	90711	90703		
20	Drain tube				
21	Tunnel				
22	Screw				
23	Base				
24	Pocket cover				
25	PCB cover				
26	Main PCB	90704 <i>C-model</i>	90712 <i>X-model</i>		
27	Retaining plate				
28	Magnet				
29	Magnet basket				
30	Flange lock				
31	Bushing				
32	Saddle		51802		
33	Spring				
34	Bracket				
35	Shaft				
36	Link				
37	Drain plug				
38	O-ring				
39	Blind plug water fill				
40	Pump	90714			
41	Water supply tube		90705		127
42	Nozzle				
43	O-ring				
44	Wiring harness				



		Spare part number	Spare part number	Colours available
1	Cover		90713	62, 127
2	Seat			
3	Bowl			
4	Screw			
5	Sticker control knob		90723	62, 127
6	Control PCB		(before 90715)	
7	Control knob			
8	Cosmetic cover straight Cosmetic cover curved			
9	Bench welded			
10	Base			
11	Tunnel			
12	Screw			
13	Pocket cover			
14	PCB cover			
15	Main PCB	90716		
16	Retaining plate			
17	Magnet			
18	Magnet basket			
19	Flange lock			
20	Screw			
21	Bushing			
22	Saddle		51802	
23	Spring			
24	Bracket			
25	Shaft			
26	Link			
27	Wire harness			
28	Water supply tube			
29	Hose clamp		90717	
30	Solenoid valve			
31	Hose nut			
32	Hose barb			
33	O-ring		90718	
34	Nozzle			
35	Water supply tube			
36	Water supply tube			
37	Bracket			
38	Screw			
39	Vacuum breaker	16833		
40	Screw			



		Spare part number	Spare part number	Spare part number	Colours available
1	Sliding cover	32301			06
2	Blade opener	32300	32331 <i>mechanism right</i>	32332 <i>mechanism left</i>	16
3	Washer				
4	Seal parker				
5	Mechanism retainer				
6	Holding tank plate Left hand version	32302			06
6A	Holding tank plate Right hand version	32328			06
7	Seal mechanism	50724			06
8	Lip seal	23721			
9	Seal plate				
10	Screw				
11	Blade	50731			
12	Bearing				
13	Blade arm				
14	Bushing				
15	Screw				
16	Blade driver				
17	Support track				
18	Screw				
19	Retainer	90706			
20	Magnet				
21	Float arm				
22	Upper automatic vent	23722		06	
23	Seal				
24	Foam				
25	Pour out spout		32306	06	
26	Measuring cup	25810		16	
27	O-ring				
28	Pull handle	51805		16	
29	Pull handle bushing right				
30	Pull handle bushing left				
31	Spring				
32	Waste-holding tank complete		90707 <i>right hand version</i>	90708 <i>left hand version</i>	06
33	Tank lock clip	51801			16
34	Wheel		32308		06
35	Wheel bearing right				
36	Wheel bearing left				
37	Wheel bracket				
38	Vent seal		32307		16
39	Spring				
40	Vent button				

		Spare part number	Spare part number	Spare part number	Colours available
41	Handle				
42	Screw				
43	Handle cover				

Colour Numbers	Description	Colour reference
06	Slate Grey	RAL 7015
07	Traffic Grey	RAL 7042
10	Ivory-United States	Not available
16	Turquoise Green	RAL 6016
30	Mocha	NCS S 2005-Y40R
38	Grey Beige	RAL 1019
44	Beige-Europe	PMS 05543P
47	White/Silver	Not available
57	Creamy White	RAL 9001
62	White/Grey	Not available
66	Light Ivory	RAL 1015
68	Grey White	RAL 9002
74	Moon Grey	Pantone 417
78	Yellow	RAL 1003
79	Edelweiss	Ideal-Std. 46
88	Grey-Brown	Not available
89	Granite	Not available
90	Anthracite Grey	RAL 7016
92	Orange	Not available
111	Signal White	RAL 9003
127	White	NCS S 0300-N
130	Ruby Red	RAL 3003
132	Signal Black	RAL 9004
133	Agate Grey	RAL 7038
135	Light Grey Granite	Not available