

# Contents

## 1. General Information

1-1.	Introduction .....	2
1-2.	Proper use and operation .....	3
1-3.	Safety Notes .....	4

## 2. Contents

2-1.	Accessory Include .....	5
2-2.	Name of parts .....	6

## 3. Operating Instruction

3-1.	Connection Diagram .....	7
3-2.	Functional Description .....	8
3-3.	Quick Reference .....	10

## 4. Program update

4-1.	Connection Diagram for updating .....	11
4-2.	Update Process .....	12

## 5. Trouble Shooting

5-1.	Trouble Shooting .....	16
------	------------------------	----

## 6. Specifications

6-1.	Dimension .....	17
6-2.	Specifications .....	17

ENGLISH

GERMAN

FRENCH

SPANISH

DUTCH

# 1. General Information

## 1-1. Introduction

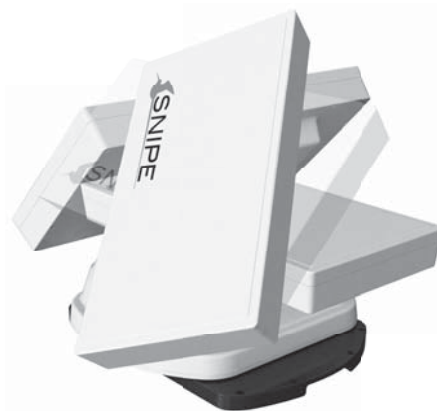
These instructions describe the functions and operation of the SNIPE auto skew satellite system. Correct and safe operation of the system can only be ensured by following these instructions.

Your SNIPE is an intelligent satellite TV reception antenna system which can align itself towards a preset satellite automatically as long as the system is located within the footprint of this satellite.

The SNIPE only occupies requisite space while it performs the necessary adjustments with the slim and agile antenna body.

For general operation, please ensure that the system always has a clear view to the sky. If the satellite's signal beam is interrupted by obstacles such as mountains, buildings or trees, the unit will not function and no TV signal will be received.

The first few pages of these instructions contain information about using the general functions of your SNIPE, followed by an explanation of all the adjustment options. The last pages of the instructions cover various technical aspects of the SNIPE.



## 1-2. Proper use and operation

This product has been designed for portable use and fixed installation on vehicles with maximum speeds of 130 km/h. It is designed to automatically aim an antenna at geostationary television satellites.

The power to the system is supplied by a standard vehicle electrical system with a rated voltage of 12 or 24 Volts DC. For installations where a main connection is provided, a suitable 230 Volt AC to 12 DC Volt power adaptor must be used.

Use of the equipment for any other purpose to the one specified is not permitted.

### **Please also note the following instructions from the manufacturer :**

- It is not permitted to change the overall device by removing or adding individual components.
- The use of any other components to those originally installed is not permissible.
- Installation must only be performed by sufficiently qualified personnel. All instructions in the supplied Installation Instructions, which is separately provided, must be carefully followed.
- The product does not require any regular maintenance. Housings and enclosures must not be opened. Checks and maintenance work should always be carried out by a qualified specialist.
- For car mounting system, all of the relevant and approved guidelines of the automotive industry must be observed and complied with
- The equipment must only be installed/operated on hard vehicle roofs/ground which are sufficiently strong and inherently stable.
- Avoid to clean your vehicle with the mounted satellite system in a single-bay or drive-through car wash or with a high-pressure cleaner..

## 1-3. Safety Notes



In order to ensure that your SNIPE works properly you must ensure that it is correctly used and connected follow the Operating Instructions in this manual.

When it is correctly installed, the antenna automatically assumes the rest position when the ignition is switched on and locks itself there. If the system cannot fully retract or cannot retract at all due to a fault, then it is your responsibility to check that the antenna is safely and properly stowed.

Please note also that different legal requirements apply to the operation of electrical and electronic equipment in different countries. As the user of this equipment, you yourself are responsible for ensuring compliance with the relevant laws and regulations.

The manufacturer accepts no liability for direct or indirect damage or for consequential damage to the system itself, motor vehicles or other equipment or goods resulting from the connection of unsuitable battery systems or installation/wiring errors.

## 2. Contents

### 2-1. Accessory Include



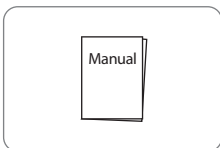
Main unit



Controller



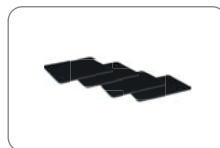
Cigarette lighter adaptor

Receiver cable  
(12m - Grey color)Controller cable  
(12m - Black color)

User manual



Carrying case



Base Pads

#### Option

Please check your purchasing package. These option parts are not included in the basic package.  
(Please contact your local dealer/shop for more information on option package)

#### Option 1 : Car mounting plate accessories



Mounting plate



Allen wrench



M6 × 8, M4 × 16, M4 × 20



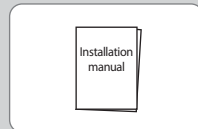
Cable holder



Cable gland



Controller bracket

Car mounting plate  
installation manual

#### Option 2 : Home power adaptor



Adaptor

## 2-2. Name of parts

### Main unit

LNB

Skew pivot :  $-60^{\circ} \sim +60^{\circ}$

Elevation :  $15^{\circ} \sim 90^{\circ}$

Main body :

360° turning

Mounting plate :

Car mounting  
plate installation

Base

to Receiver

to Controller

### Controller

GPS state light

HOME state light

Satellite light

HOME button

Satellite Up/Down button

OK button

Power switch

Bracket :

Car mounting  
plate installation

to Main unit

USB port :

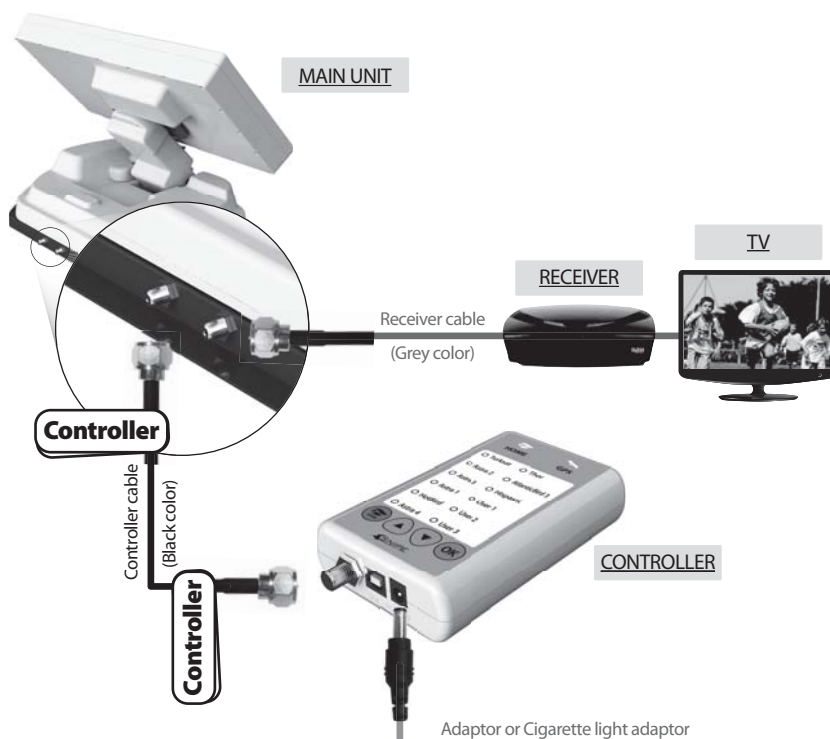
For F/W upgrade

Power port :

DC 12~24V

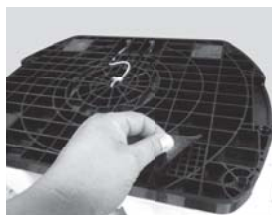
## 3. Operating Instruction

### 3-1. Connection Diagram



Use the black color controller cable to connect between the controller and antenna.

The controller cable looks similar to the antenna cable but you can distinguish them by the color and labeling.

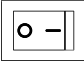




#### Portable use

Attach 4 Base Pads to the bottom plate

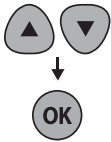
## 3-2. Functional Description

### A. Power On

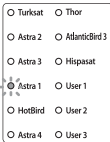
Function	Description	Operation
	"Power" Switch	i. When the all cable connections are completed, switch on with the "Power Switch" button on the top of the controller.
	"Home State" Light Solid ON	ii. If the position of antenna was in home position, "Home state light" will be solid on to show it is ready to use.
	"Home State" Light Solid ON ↓ Solid ON	iii. If the position of antenna was not in the home position, "Home state light" will flash, and the antenna will return to the home position within a maximum 2 minutes. Then "Home state light" will be solid on.

◆ The "Home position" means antenna folded completely to the body part which is the basic position for carrying in hard case.

### B. Selecting the satellite

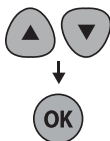
Function	Description	Operation
	"Satellite Up / Down button" Light ↓ "OK" Button	i. Once antenna and controller are connected, you can select & change the satellite as you require. ii. Select the desired satellite using the "Up/Down" buttons, then press the "OK" button to accept the setting. iii. If you select the wrong satellite, you can re-search target satellite using the "Up/Down" button, then press the "OK" button to accept the new setting.

### C. Searching the satellite


Function	Description	Operation
	"Satellite" light	i. After the satellite selection, "Home State" light will go off and the LED light of the selected satellite will start flashing. ii. Once selected satellite has been found, the LED light of the satellite will become solid.




### D. Changing the satellite

Function	Description	Operation
	<p>"Satellite Up / Down button" Light</p> <p>↓</p> <p>"OK" Button</p>	<p>i. If you want to change desired satellite, you can change the target satellite using the "Up/Down" buttons, then press the "OK" button to select the new satellite.</p>

### E. Back to Home position

Function	Description	Operation
	"HOME" Button	<p>i. Whenever you wish to return the antenna back to the Home position, press and hold the "Home" button for a few seconds.</p>

### F. GPS LED light

Function	Description	Operation
	"GPS" light	<p>i. GPS LED confirms the current location from 24 GPS satellites in the world.</p> <p>ii. When your SNIPE identifies a GPS signal, GPS LED light will remain on, regardless if the antenna is pausing or moving. GPS can help to search for the satellite faster &amp; catch the optimum satellite signal, and assist SNIPE to achieve the best elevation &amp; skew angle.</p> <p>iii. Also, while program updating, the GPS LED light will flash to show the update procedure is processing. During this time, GPS LED light on doesn't mean the unit is communicating with GPS satellite.</p>

### 3-3. Quick Reference

Classification	Description
Setting & Connecting	<ol style="list-style-type: none"> <li>1. Take out the antenna from carrying case, and place it on the flat ground(or mount it on the top of the camper) facing South &amp; no obstacle.</li> <li>2. Connect the left port of the antenna, which located at the rear of the main unit, to the controller using controller cable. <ol style="list-style-type: none"> <li>a. One end of the controller cable connect to "controller" port of the main unit of the antenna.</li> <li>b. The other end of the controller cable connect to the port of the controller.</li> </ol> </li> <li>3. Connect the power cable to controller . <ol style="list-style-type: none"> <li>a. If you use the power source from a car or caravan etc, use the cigarette lighter adaptor to connect the power to controller.</li> <li>b. Otherwise use a suitable 12 Volt DC adaptor to connect the power to controller.</li> </ol> </li> <li>4. Connect between the right port of the antenna, which located at the rear of the main unit, to the receiver using receiver cable.</li> </ol>
Operating (Searching the satellite)	<ol style="list-style-type: none"> <li>1. Switch on with the "Power switch" button on the top of the controller.</li> <li>2. Upon power on, all LED will flash twice.</li> <li>3. Wait until "HOME State" light &amp; one "Satellite LED" light, which you set previously or the first satellite in the controller (Turksat), remain solid on.</li> <li>4. Select the desired satellite using the "UP/DOWN" buttons, then press the "OK" button to select.</li> <li>5. The satellite LED light will start to flash, wait until it stays solid on.</li> <li>6. When the satellite LED light stays solid on, the selceted satellite has been located and a signal can be seen on the satellite TV.</li> </ol>



#### WARNING

When you move SNIPE, the flat dish of the antenna must be be in the Home position.



#### NOTE

Car Mounting Instruction will be provided separately.



#### NOTE

SNIPE will be automatically folded back to HOME position if the vehicle moves faster than 10km/h, when the reception of GPS is stable.



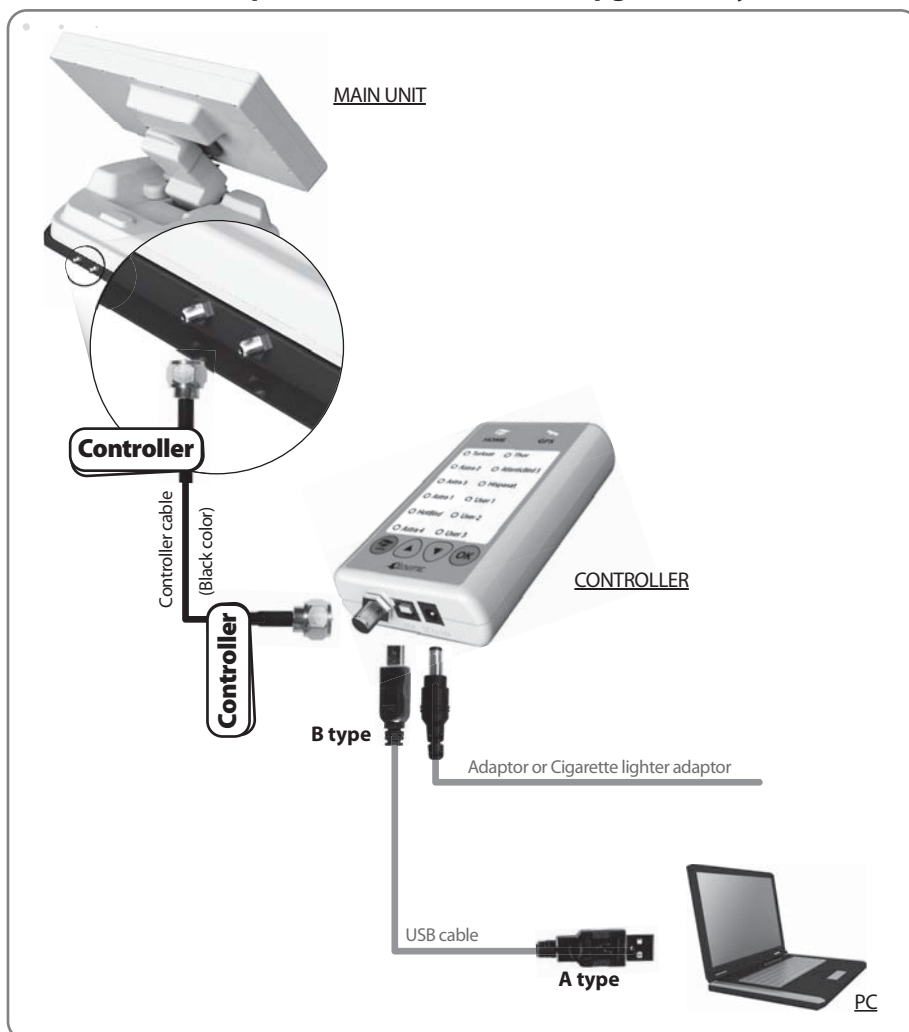
#### NOTE

Purchase Power Adapter separately from us, or if you purchase it on your own, purchase ONLY 18V / 3.3A which is certified.

## 4. Program update

### 4-1. Connection Diagram for updating

“USB port is used for firmware upgrade only”



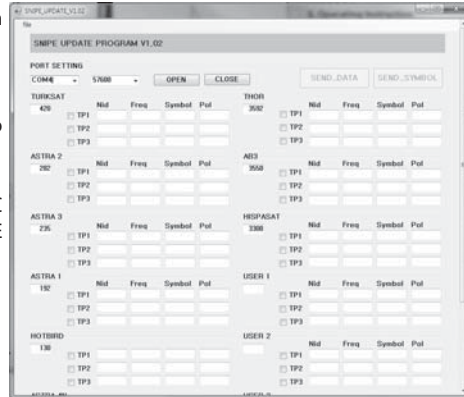
**Simply connect the Controller to PC using USB cable.**  
**USB cable is not included in the package.**

## 4-2. Update Process

Using SNIPE Update Program, refresh the satellite data of your SNIPE.

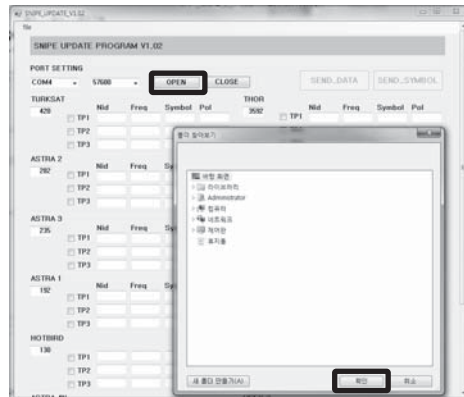
### i. Update Program download

- ① Download the SNIPE Update Program to your PC from our homepage ([www.self-sat.com](http://www.self-sat.com)).
- ② Download the newest satellite data to your PC from our homepage.
- ③ Connect the controller to your PC using USB cable, then install the SNIPE Update Program you downloaded.

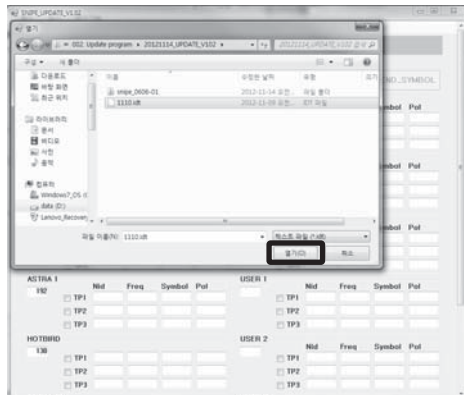


### ii. Update the 9 satellites which are pre-stored

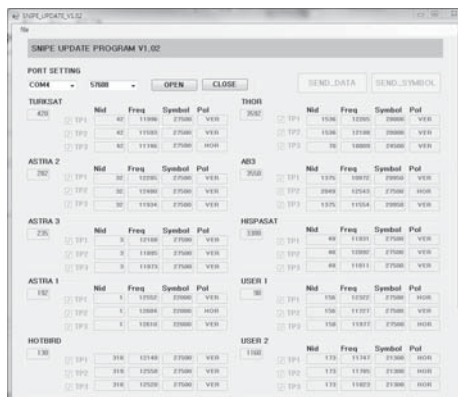
- ④ Click "file open" on left-upper side on program window to select folder which contains downloaded satellite data.
- ⑤ Select folder and click the "OK" button.



- ⑥ When folder is opened, select file and click the "OPEN" button.

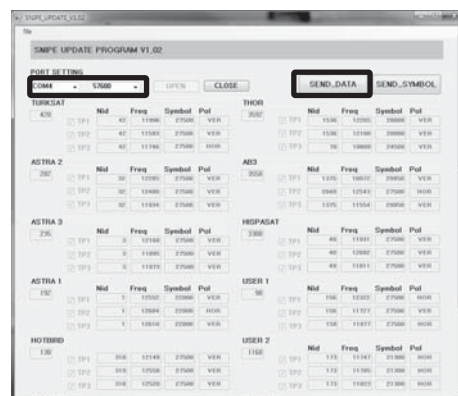


- ⑦ The data of 9 satellites are shown to you, but they are not modifiable by yourself.

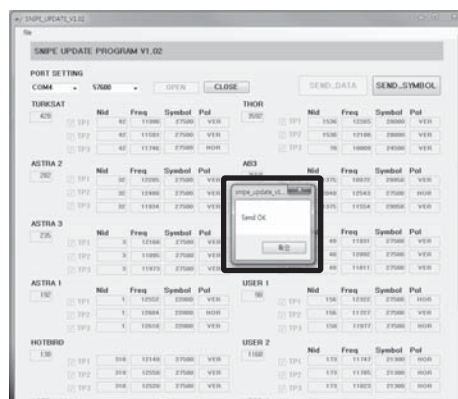


- ⑧ Check the Port Setting, which is one opened, then click the "OPEN" button.

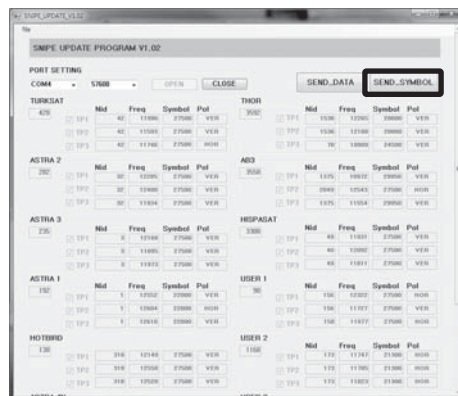
- ⑨ Once "SEND\_DATA" button is activated, click the "SEND\_DATA" button.



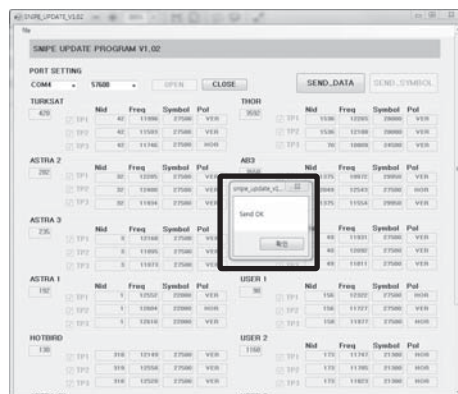
- ⑩ Wait until "Send OK" message box is popping up.



- ⑪ If you want to update Symbolrate Data, click "SEND\_SYMBOL" button on right-upper side on program window.

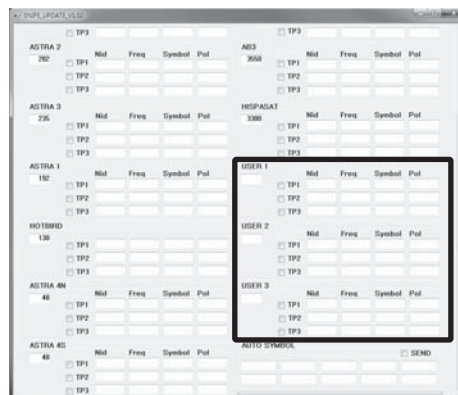


- ⑫ Once "Send OK" message box is shown, update is completed.



### iii. Update USER 1, 2, 3

- USER 1, 2, 3 are for extra addition of your desired satellites which are not pre-stored.
- Follow the instruction same as ①~③, then tick the satellite box on the left of USER 1~3 which you wish to update, and write the satellite data in the box by yourself. Then follow the procedure from ⑧ as above.
- To get detailed information of satellite data, please contact your local distributor.



### NOTE



How to update satellite information can be changed by reflecting the newest satellite information. Please make sure to get how to update the product through our web site([www.self-sat.com](http://www.self-sat.com)).



## 5. Trouble shooting

There are a number of common issues that can affect the signal reception quality or the operation of the SNIPE. The following sections address these issues and potential solutions.

### A. No function when you power on the Controller

- i. Check again all the cable connections have been made correctly.
  - ✓ Connection between the power and controller
  - ✓ Connection between the controller and the antenna. Make sure that the left port of the antenna should be connected to the controller.
- ii. Check if the cigarette lighter adaptor or adaptor has been damaged.

### B. Fail to search the selected satellite

- i. Satellite signals can be blocked or degraded by buildings, trees.  
Make sure there are no obstructions in a southward direction.
- ii. Check your program of Controller often, and get the latest updates for your SNIPE

### C. Mechanical problems

- i. If the antenna does not move into desired position.
  - ✓ Try to power OFF/ON again.
- ii. If the antenna makes a noise whilst remaining static.
  - ✓ Try to power OFF/ON again. If problem persists, please contact your local distributor for assistance.

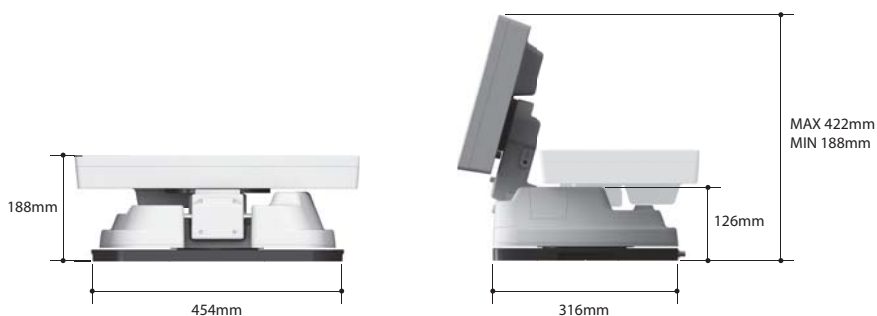
### D. Other issues

- i. If the system has been improperly wired, it will not operate properly. Contact your local distributor for assistance of cable damage.



## 6. Specifications

### 6-1. Dimension



### 6-2. Specification

Dimensions		454 x 316 x 188 mm
Weight	Main Unit / Basic Package / Full Package (with optional parts)	10.1Kg / 15.6Kg / 19.1Kg
Work Condition		Stationary
Antenna Gain		33.7 dBi @ 12.7GHz
Min EIRP		50 dBw
Polarization		Linear (Horizontal / Vertical)
LNB Output		1 output(optional 2 output)
LNB Input Frequency		10.7 ~ 12.75 GHz
LNB Output Frequency		950 ~ 2,150 MHz
Angle Range		15° ~ 90° / 360° / -60° ~ +60°
Search Speed	Elevation / Azimuth / Skew	6°/s / 12°/s / 15°/s
Satellite Searching Time		180 seconds (max.)
Power Requirement		DC 12~24V
Power Consumption		30W (in searching)
Operating Temperature		-30°C ~ +60°C