

# Glasgow's Low Emission Zone

[glasgow.gov.uk/LEZ](https://glasgow.gov.uk/LEZ)



# What is a Low Emission Zone (LEZ)?

A Low Emission Zone is an area where the most polluting vehicles are not permitted to enter.

Vehicles that do not meet the emission standards set for a Low Emission Zone will not be able to enter the zone. Unless exempt, a penalty will be payable.

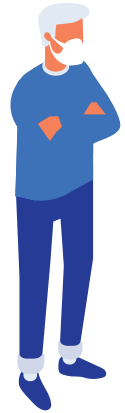
LEZs are intended to reduce pollution and improve air quality in areas where standards are not being met. They can also help quicken the uptake of lower emission vehicles and encourage people to consider alternative methods of transport such as walking, cycling and using public transport.

Improving air quality also makes towns and cities much more pleasant and healthier places for living, visiting and working.

The Scottish Government has committed to introducing Low Emission Zones in Edinburgh, Dundee and Aberdeen by 2020.

# Glasgow's Low Emission Zone

Air pollution impacts negatively on human health; particularly so for the very young, the elderly and those with existing respiratory and cardiovascular conditions.



Harmful nitrogen dioxide is being recorded in our city centre at levels that do not meet statutory objectives. As the main source of this air pollutant is from road traffic, we introduced Scotland's first ever LEZ in our city centre on **31 December 2018**.

The health benefits from better air quality will extend past our city centre, as cleaner vehicles travel into the zone from outlying areas.

At present, only local service buses are affected by Glasgow's LEZ, however the emission standards required to enter the zone will apply to **all** vehicles by 2022.



# Key Dates

Glasgow's LEZ is being **phased in** to give everyone the chance to prepare.

**Phase 1** was introduced on **31 December 2018** and applies to local service **buses** only



**Phase 2** will be implemented on **31 December 2022** and will apply to **ALL** vehicles

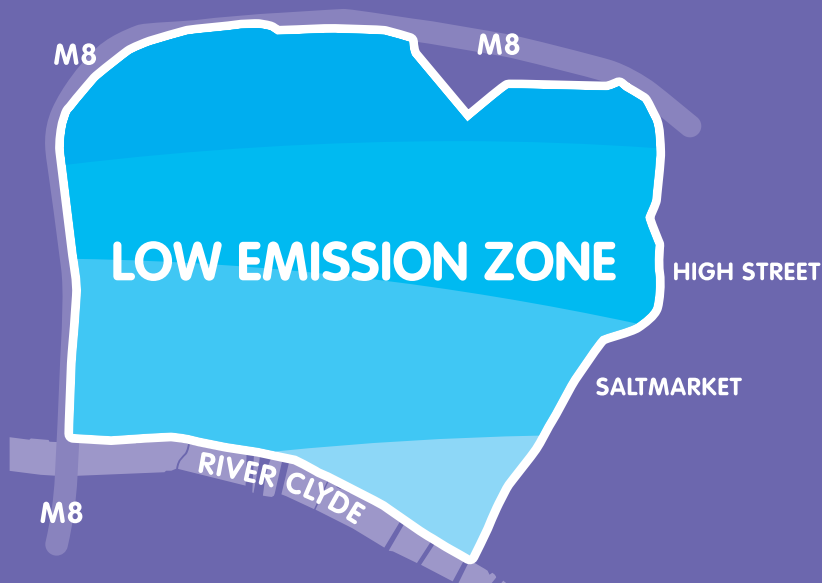


A **grace period**, which is additional time to comply with the emission requirements, will be considered for zone **residents** and possibly for those vehicles registered at a **business address** within the LEZ.



# Where is Glasgow's LEZ?

Glasgow's city centre LEZ falls within the area bounded by the River Clyde, the M8 motorway and High Street/Saltmarket.



Phase 1  
[glasgow.gov.uk/LEZ](http://glasgow.gov.uk/LEZ)



# Will the LEZ area be the same for Phase 2?

The area covered by **LEZ Phase 2** is expected to be broadly similar in geography and will be set following consideration of key factors through a modelling process.

## Which roads/streets are covered by Glasgow's LEZ?

There is an **interactive map** with an address checking tool available at **[glasgow.gov.uk/LEZ](https://glasgow.gov.uk/LEZ)**

The map shows which roads/streets fall within Phase 1 of Glasgow's LEZ and will be updated as soon as the boundary for Phase 2 of the LEZ is set.



# What are the required LEZ emission standards?

Engine Type:	Euro Emission Standard:
Petrol	Euro 4
Diesel/Heavy Diesel	Euro 6/VI

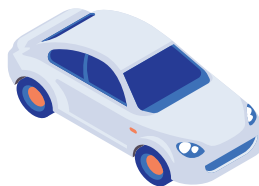
Emissions requirements for motorcycles and mopeds are under consideration.

The aim of Euro standards are to reduce levels of harmful exhaust emissions such as nitrogen oxides (NO<sub>x</sub>) and particulate matter (PM).



# How do I check the Euro standard of my vehicle?

Until the DVLA's online checker is available, vehicle age can be used as an **approximate** guide to determine the Euro emission standard of a vehicle.



There are **variables** however, so if in any doubt, please check with your vehicle manufacturer.

Euro Emission Standard:	Introduced:	Must meet emission standard if new vehicle sold after:
Euro 4 - Petrol	January 2005	January 2006
Euro 6 - Diesel	September 2014	September 2015

Generally, heavy diesel vehicles registered with the DVLA after 2014, must meet the Euro VI emission standard.

# Are there any exemptions?

It is likely that some categories of vehicle will be exempt from LEZ requirements.

Any exemptions will be determined by Scottish Ministers.



# What hours does Glasgow's LEZ operate?



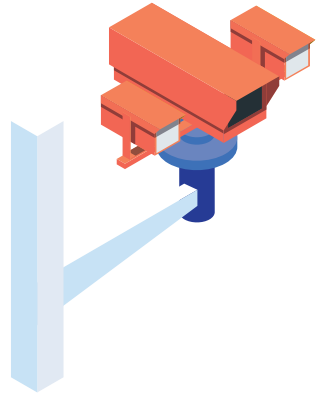
Low Emission Zones across Scotland are expected to operate on a 24/7 basis,

however it's anticipated that local authorities will have the flexibility to set operational hours themselves.

Timings for Glasgow's LEZ will be set in due course.

# How will Glasgow's LEZ be enforced?

Once Phase 2 of Glasgow's LEZ is implemented on **31 December 2022**, enforcement will be by way of Automatic Number Plate Recognition (ANPR) cameras.



## What will the penalty be if a non-compliant vehicle enters the LEZ?

Scottish Ministers will specify the penalty sum in regulations.



Any penalties will be used to support the air quality objectives of Glasgow's LEZ.

# How will I know I'm heading towards Glasgow's LEZ?

Statutory roadside signage will be installed, and positioned to take account of those who do not wish to enter the zone to take an alternative route.



Meantime we've installed **indicative** LEZ signage to raise general awareness of the zone. These highly visible signs have been positioned at key routes into our city centre to give motorists several years advance notice of the zone area and to highlight the web address where the most up to date information about Glasgow's LEZ can be found.



For the latest information, follow us on social media and visit:

**[glasgow.gov.uk/LEZ](https://glasgow.gov.uk/LEZ)**



@GlasgowCC #GLEZGOW



@GlasgowCC

For the national picture - visit:

**[lowemissionzones.scot](https://lowemissionzones.scot)**