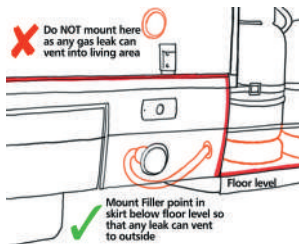


Where to fit the Filler

When deciding where to fit the filling point, it is important to take into consideration:

- 1.... that a relatively heavy gas gun has to be connected and disconnected for filling.
- 2.... what would happen if the hose connection onto the back of the filler should leak. Under no circumstances should gas be able to penetrate the living area but should vent to the outside.



Fit in the skirt of the vehicle, below the floor level as any escaping gas can then vent freely to the atmosphere



Use the Filling Point Mounting Bracket in the cylinder compartment - either between the cylinders or top mounted.



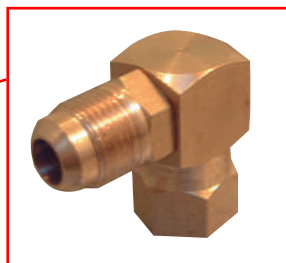
IMPORTANT

Opening the locker door to fill up may cause some stations to refuse filling...

Fitting the Filler Point in the door

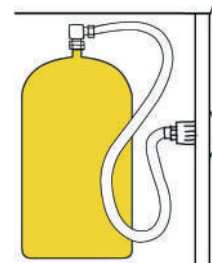
It is absolutely critical that the hose is free from stress. The door should be able to close naturally at all times. To avoid stress and strain on the hose, we recommend using the 01-4210 (90 degree fill adapter) which will allow the hose to fold back naturally with the fold of the door (see below left).

NB. By aiming the adapter at an inclined angle above the horizontal, the hose can clear the top of the cylinders.



01-4210 Right Angled Adapter

Do NOT!....

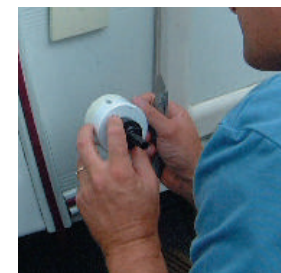


DO NOT fit the filling point in this manner in a door as movement and closure of the door can compress or fracture the hose.



Door closing can cause ruptures to hose due to extreme kinking and compression

Installation in a Caravan



Decide which side you would like the filling point. We would suggest either above or below the barbecue point (if fitted) or the same side as the petrol filler on your car.



Mark out and cut a 70mm hole for the filler point



Using a file, create 2 small cutouts top and bottom for the lugs on the filler bracket.



These prevent the filler from rotating when fitted



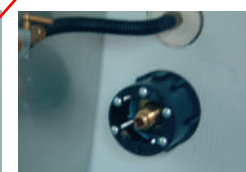
Ensure side lugs are kept Horizontal

Install the Brass Filler head into the bracket using the 4 screws and bracket provided



NOTE: Before fixing the housing to your Caravan/Motorhome, it is better to fit the connection hose onto the outlet of the brass filler using a spanner and a set of grips which avoids putting too much rotational pressure onto the housing when tightening up the connection.

Using a small amount of silicon sealant around the front flange of the housing, push into the hole and secure using the rear-mounting bracket with 6 self-tapping screws. **VERY IMPORTANT:** Select the optimum screw length from one of the three sets supplied, making sure the screw ends do not protrude into the filling box as this can prevent the filling gun connecting properly - if necessary, cut off any excess.



Connect the filler hose to the cylinder filler valve and securely fasten. To turn your system into a twin cylinder system you require a Cylinder-2 and Stainless Steel Connection Hose.