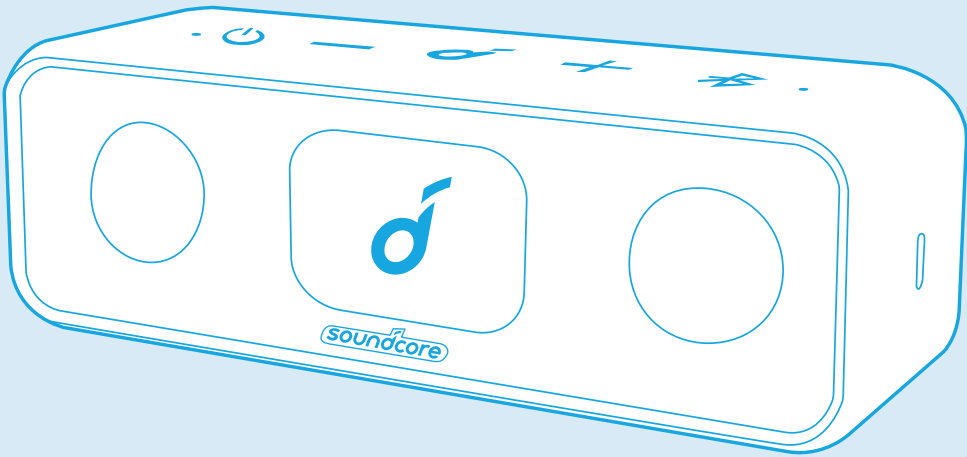


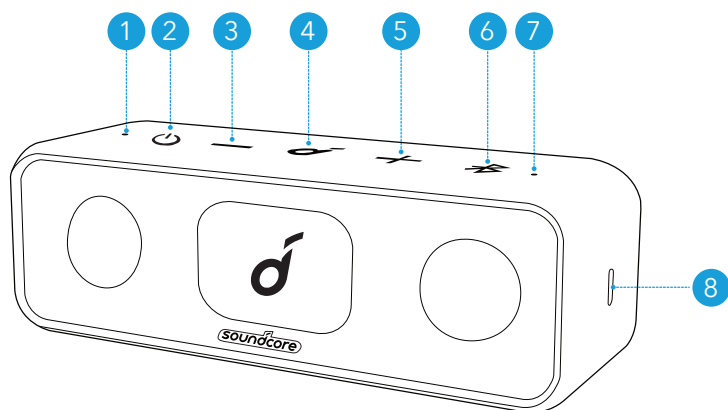
soundcore



Soundcore 3

USER MANUAL

At a Glance

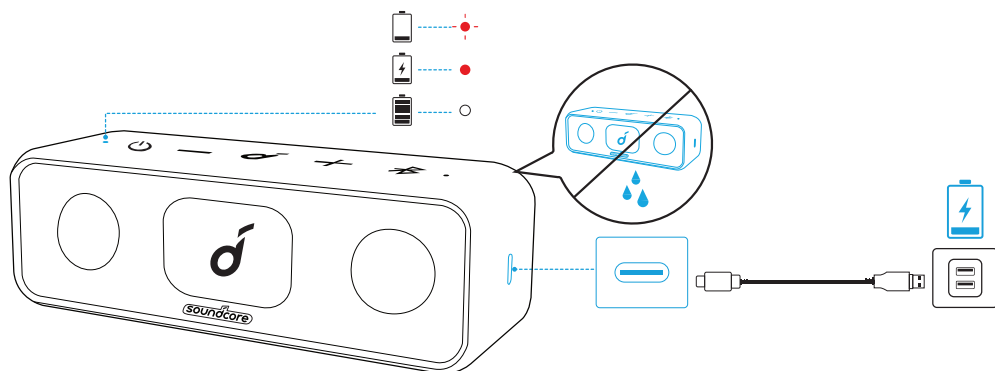


- 1 Power LED
- 2 Power button
- 3 Volume down button
- 4 Multi-function button
- 5 Volume up button
- 6 Bluetooth/PartyCast button
- 7 Bluetooth/PartyCast LED
- 8 USB-C charging port

Charging

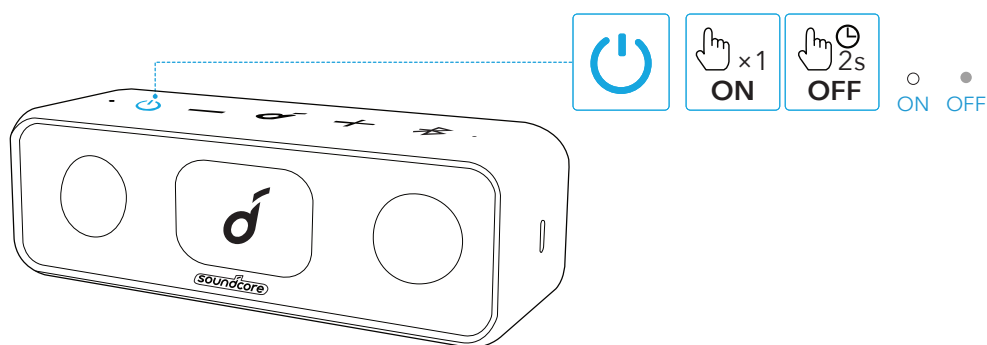


- Fully dry off the USB port before charging.
- Use the provided USB-C cable to prevent any damage.
- Fully charge this speaker before the first use to prolong the lifespan of the built-in battery.
- Disconnect this speaker from the charger when fully charged. Do not charge for extended periods.



	Flashing red	Low battery
	Steady red	Being charged
	Steady white	Fully charged

Powering On/Off



Power on		Press
Power off		Press and hold for 2 seconds

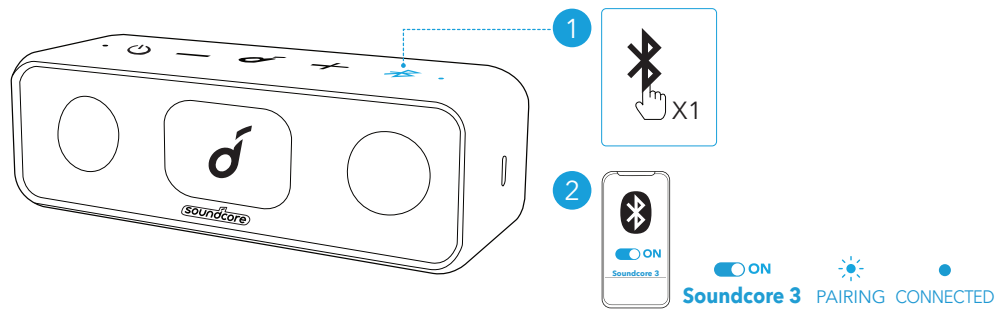


- This speaker will power off automatically 30 minutes after no audio input or button inactivity.

Using your Soundcore 3

Bluetooth Mode

With this speaker, you can enjoy music through your Bluetooth-enabled devices.



	Press	Enter Bluetooth pairing mode
	Flashing blue	Bluetooth pairing
	Steady blue	Bluetooth connected



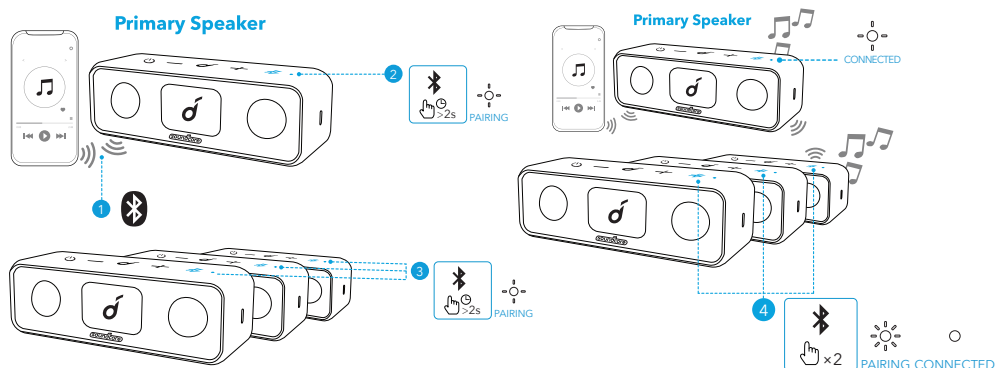
- **Dual Bluetooth Connection:** This speaker can pair up to 2 mobile devices via Bluetooth. To pair with another device, press the Bluetooth button to re-enter Bluetooth pairing mode.
- This speaker can only play music on one mobile device at a time. To play from another connected device, pause the currently active device first.
- Each time you power on your Soundcore speaker, it will automatically connect to your last connected device if available within the Bluetooth range. If not, press the Bluetooth button to enter Bluetooth pairing mode.

PartyCast Mode

You can wirelessly connect up to 100 identical Soundcore 3 speakers together.

1. Press and hold the Bluetooth button for 2 seconds on the Soundcore 3 that's currently connected to your device as the primary speaker.
2. Repeat Step 1 on the other Soundcore 3 you want to connect and then press the Bluetooth button twice to make them secondary speakers in PartyCast pairing.
3. The secondary speakers will automatically connect with the primary speaker.

* Soundcore speakers with PartyCast function can be connected with Soundcore 3.



Press and hold for 2 seconds

Enter PartyCast pairing mode



Flashing white

PartyCast pairing



Flashing white (Primary speaker)

PartyCast connected



Steady white (Secondary speakers)

When PartyCast mode is successfully entered:

- Any secondary speaker can be switched to become the primary speaker by pressing the Bluetooth button twice and connecting to your smartphone. Any primary speaker can be switched to become the secondary speaker by pressing the Bluetooth button twice and searching for an available primary speaker.
- To exit the PartyCast mode, press and hold the Bluetooth button on any speaker for 2 seconds.

Button Controls



Press

Play/Pause



Press twice

Next track



Press three times

Previous track



Press or press and hold

Adjust volume



Press

Answer/End a call



Press

Answer a second incoming call and put the current call on hold



Press and hold for 2 seconds

Reject an incoming call



Press and hold for 2 seconds

Switch between a call on hold and an active call



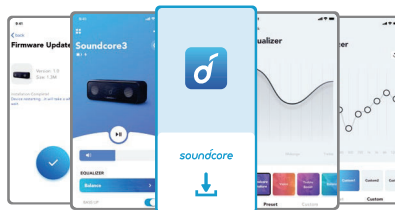
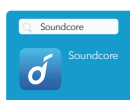
Press and hold for 2 seconds

Activate Siri or other voice assistant software

Soundcore App

Download the Soundcore App for enhanced product experience.

- Check product information
- Update firmware
- Indicate battery status
- Remotely control the volume and play/pause
- Customize EQ settings
- Set Auto-power off time



Specifications

 Specifications are subject to change without notice

DC power input	5 V $\overline{\text{---}}$ 2 A
Battery capacity	6700 mAh
Audio output power	8 W x 2
Charging time	Appr. 4 hours
Playtime (varies by volume level and music content)	Up to 24 hours
Waterproof level	IPX7
Bluetooth version	5.0
Bluetooth range	20 m / 66 ft